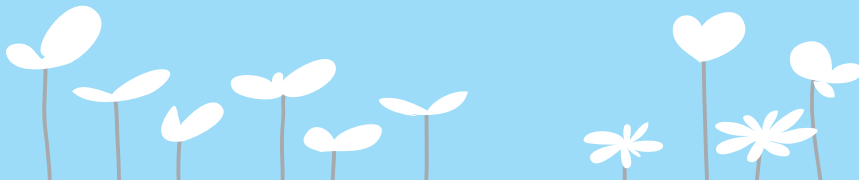


Raffles
College of Design and Commerce

Education*faculty*

EARLY CHILDHOOD EDUCATION

PROSPECTUS 2012



CONTENTS

Welcome	3
About Us	4
National Certificate in Early Childhood Education & Care	9
Academic Year	12
Course Modules	13
Enrolment Information	15
Scholarship Information	22



WELCOME



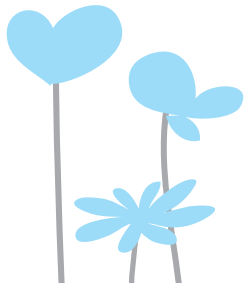
It is my pleasure to welcome you to Raffles College of Design and Commerce. Raffles offers students the opportunity to study early childhood education in one of New Zealand's fastest growing employment sectors.

As a student, you will benefit from a supportive and well-resourced learning environment. You will gain knowledge and skills from experienced lecturers, high quality teaching, and receive individual support. Our aim is to provide the best possible learning environment, so that our students will deliver high standard of skills, knowledge and work ethic as a successful early childhood professional. The skills and attributes gained during your study will help you start your career as an early childhood educator. On completion of the programme, you will have the opportunity to progress to a degree in early childhood teaching or employment in this fast growing industry.

We welcome students from all backgrounds, who are passionate and have a genuine interest in working with children.

A handwritten signature in blue ink that reads "Jay Mullan".

Jay Mullan
Early Childhood Education Programme Co-ordinator



ABOUT US



Raffles College of Design and Commerce (RCDC) is a unique education provider based in Auckland, New Zealand specialising in graphic design, digital photography, digital animation, business, and early childhood education.

Keeping pace with industry, we deliver excellent courses and produce graduates who are well respected and successful in their creative careers. We do this by having lecturers who are active in industry, so their teaching impacts you with real-time knowledge of what is going on out there. Raffles College of Design and Commerce is wholly owned by Raffles Education Corporation (REC), Asia Pacific's premier creative design and business education provider with a network of over 39 colleges across the Asia Pacific region, including locations such as Singapore, China, Thailand, Australia, New Zealand, India, Cambodia, Indonesia, Malaysia, Mongolia, Vietnam, Sri Lanka, Bangladesh, Philippines and Saudi Arabia.



Raffles delivers its programmes through its own campuses in New Zealand and internationally in partnership with Raffles Education Corporation (REC) and Raffles University (RU). Offering our programs through RU into the REC network internationalizes RDCD and provides our students and staff with a unique opportunity to live and work in a number of international environments. This dynamic synergy enables our students to gain a competitive edge in the global community.

Raffles' goal is to deliver excellent design and management programmes. Our rigorous programmes seek to develop students' creative and technical skills in a myriad of disciplines. The combination of information technology, industry-relevant curriculum, and international faculties with industry-specific experience ensure that the students are familiar with international best practices and trained to high professional standards.




Raffles is committed to nurture creative talents, design management expertise, and thinking professionals for industry. Through our quality focussed programmes we strive to provide our students with a well-rounded education that gives them a head start in their chosen careers.



RafflesEducationCorp

Raffles Education Corporation Limited is the largest private education group in the Asia-Pacific region. Since establishing its first college in Singapore in 1990, the Group has grown to operate 3 universities and 39 colleges across 15 countries in the Asia-Pacific region: Singapore, China, India, Indonesia, Sri Lanka, Bangladesh, Vietnam, Malaysia, Thailand, Mongolia, Australia and New Zealand.



As a premier education provider, we are committed to provide high quality education relevant to industry and adapt to the socioeconomic needs of the communities in which we operate.

More than 32,000 students enrolled in Raffles Education Corp's tertiary programmes benefit from a quality education that provides graduates with a well-rounded hands-on learning experience that is relevant to the industry.

REC also operates the Oriental University City (OUC) in Langfang, Hebei Province, China – a 3.31 million square metre self-contained campus. Within this campus, OUC provides education services to 14 colleges with a total student population of 35,000.

RafflesEducationCorp employs over 2,900 academic and administrative staff, and is listed on the main board of the Singapore Exchange.





EARLY CHILDHOOD EDUCATION

National Certificate in Early Childhood Education and Care (Level 5)

1 Year Full Time (1 day 3 evenings per week over 38 weeks)

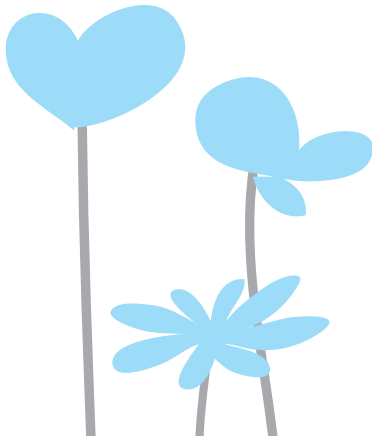
Intakes: February & July



EARLY CHILDHOOD EDUCATION



With a combination of theory and practice, you'll discover how young children learn, grow and develop. This course is designed for people who are contemplating further tertiary study or considering a career in Early Childhood Education and Care. It will provide students with the knowledge, skills, and attributes required for Early Childhood Education and Care across all early childhood services and settings within the sociocultural context of New Zealand. The course allows flexibility for learners to choose the setting in which they wish to work. This programme is built around the commitment to equipping, nurturing and empowering learners to make a difference in the lives of young children.



Practical work experience in early childhood centres is an important part of the course, and you will be placed in centres for blocks of time to experience first-hand what it is like to work in an early childhood care environment.

If you would like to work with children aged under five – the most important years in children’s development – then the Certificate in Early Childhood and Care will provide you the necessary knowledge and skills. Early Childhood Educators do the important work of nurturing and educating young children during their most formative years.

Early Childhood Educators stimulate children’s curiosity and imagination through games that help them learn, question, investigate and experiment with the world around them. Cutting out paper shapes helps children learn manual dexterity and baking cookies helps children learn proportions while free play helps children develop social skills. Every activity, from colouring to feeding the class rabbit is a learning opportunity.

As an early childhood professional, you will help children establish habits and patterns that will influence their lives. The skills developed at this age can carry on throughout the school years and set the stage for academic success.



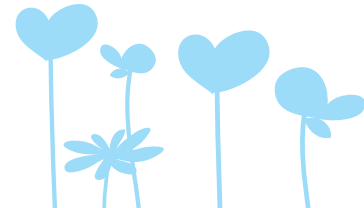
Are you up to the task of shaping and changing the future of young lives? Do you share our passion and determination to shape minds and futures?

We invite you to join us at Raffles. This programme is not just a pathway to a career, but an exciting and fulfilling calling!

ACADEMIC YEAR

YEAR 1	TERM 1	TERM 2	TERM 3	TERM 4
	Child Development	Human Development across the lifespan	Curriculum and Planning	Partnerships with family/Whanau
	Health & Safety	Learning for young children	Early Childhood Services in New Zealand	
	Ethnic and Early Childhood Education	Teacher Identity		

The Academic Overview is an estimated projection of the order which the individual subjects are delivered in the course. Depending on availability of specialty lecturers, equipment or any other factors relating to the tuition of specific course components, the overview is subject to change.



COURSE MODULES

Child Development

Students are introduced to the developmental continuum of young children from birth to school entry. They are to demonstrate the ability to describe this continuum; identify important milestones in young children's development and relate developmental patterns of young children to their learning.

Health & Safety

This module introduces students to the concepts; principles and practices related to health and safety within a wide cross section of early childhood settings. Students will consider the importance of nutrition and to be able to prepare nutritionally balanced food for infants, toddlers and young children. Health promotion and food safety within early childhood education settings will be explored.

Ethics and Early Childhood Education

This module begins with an introduction to the education and care of young children in an early childhood setting. As a foundation, students discuss the concept of ethics and the principles and purpose of a code of ethics in their relationship to the values of individuals, and to situations.

Human development across the lifespan

Students study a range of theories, critique current literature, theories, and models on human development across the lifespan. A variety of theoretical perspectives, themes of human development, and their relevance to early childhood, is explored which will be related to its application to early childhood development and teaching practice throughout the module.

Learning for Young Children

Students are introduced to theories of learning, exposing them to a wide range of theories in a chronological order. They explore ways of creating opportunities for extending young children's learning and reflect on current theories on how adults can facilitate learning for young children in an early childhood context.

COURSE MODULES (continued)

Teacher Identity

This module aims to help the students understand the concept of 'self' and the development of strong teacher identity as a foundation for good teaching. The module will then proceed to help students understand expectations of professional practice for a competent teacher/educator.

Curriculum and Planning

This module explores the New Zealand early childhood curriculum. The students are to be able to describe: the purpose, structure and content of Te Whāriki. They are to examine the principles, strands, and goals for the New Zealand early childhood curriculum.

Early Childhood Services in New Zealand

This module provides general introduction, history, development and function of the three main categories (centre-based, home-based, or parenting education) of early childhood services in mind, and emphasizes the diversity of these services in Aotearoa/New Zealand. Students are to do a comparative study of these services identifying both their similarities and differences.

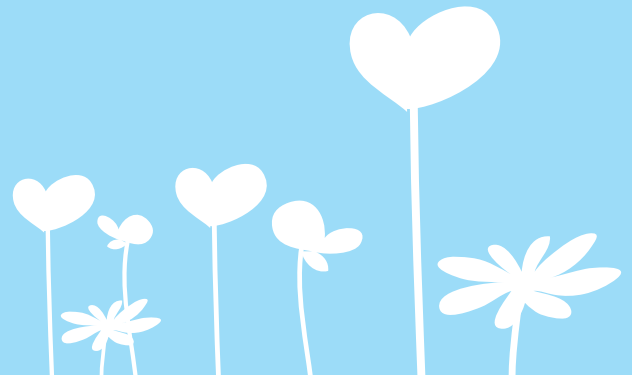
Partnerships with Family/Whanau

Forming successful relationships with parents, families/whanau is essential to the development of young children in early childhood education and care in New Zealand. With this as a driving principle, the students are first introduced to the different family forms and, analyse how as a societal structure, families in New Zealand have evolved over time in response to changes in society. The students then examine the diversity of New Zealand families and relate this to the development of early childhood education and care services.

This module also introduces the students to theories of communication. Elements of the communication process theory are identified; each element's function, barriers and possible solutions are discussed in the context of an ever-growing multicultural ECE environment. The students are to analyse specific situations, demonstrating their ability to apply theory in the practical world at the ECE centres.

ENROLMENT INFORMATION

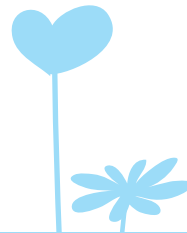
**ADMISSION REQUIREMENTS FOR
DOMESTIC & INTERNATIONAL STUDENTS**



DOMESTIC STUDENT ENROLMENT INFORMATION

(New Zealand/Australian Citizen or Permanent Resident)

School Leavers Age 18 and above must have completed at least NCEA Level 3 and demonstrate the necessary literacy and numeracy skills to succeed in an academic environment. Shortlisted applicants may be interviewed by the respective Programme Leader or Education Consultant. Course specific application requirements will be reviewed along with the following criteria and requirements:



GENERAL ENTRY REQUIREMENTS

- Completion of Year 13 or equivalent
- Minimum age of 18

COMPULSORY REQUIREMENTS

You also need to include the following with the application:

- A certified true copy of your passport or birth certificate
- Provide two written references
- Satisfy Police clearance conditions
- A certified true copy of your academic records for the highest level of schooling you have completed and any other relevant studies

If you are currently completing high school, please provide mid-year results - the final high school results are to be presented before course commencement. You are required to bring a copy of your original academic records to the College for verification.

SPECIAL ADMISSION

Domestic students (New Zealand or Australian citizen or permanent resident) aged 20 years or over that do not have formal University Entrance qualification, and do not meet the criteria above may be eligible for Special Admission. Please contact us for further details.

We encourage you to apply as early as possible in order to avoid disappointment.

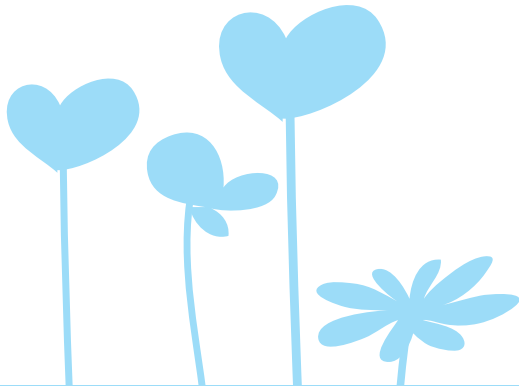
You may also like to include with your application:

- Copies of any reference that you feel are relevant
 - A copy of your CV (Resume)
-

INTERNATIONAL STUDENT ENROLMENT INFORMATION

International students can apply through our Raffles International Admission Offices (IAO) or download the international student application form from our website from: www.raffles.ac.nz. To contact one of our International Admission Office nearest to you, please visit: www.raffles-education-network.com

For any other questions, please email us at: info@raffles.ac.nz



GENERAL ENTRY REQUIREMENTS

- Completion of Year 13 or equivalent
- Minimum age of 18
- Have met our English Entry Requirements

COMPULSORY REQUIREMENTS

You also need to include the following with the application:

- A certified true copy of your passport
- Evidence of IELTS English language test results
- 2 passport-size photographs (write your name on the back)
- Provide two written reference
- Satisfy Police clearance conditions
- A certified true copy of your academic records for the highest level of schooling you have completed and other relevant studies

If you are currently completing high school, please provide mid-year results - the final high school results are to be presented before course commencement. You are required to bring a copy of your original academic records to the College for verification.

ENGLISH ENTRY REQUIREMENTS

- IELTS Score of 6.0 or higher
- Native Speaker of English
- From High School or Tertiary Institution where language of instruction is English

You may also like to include the following:

- Copies of any reference that you feel are relevant
 - A copy of your CV (Resume)
-

INTERNATIONAL STUDENT INFORMATION

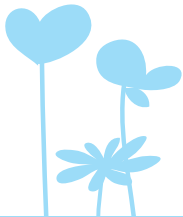
We understand that moving to a new country can be exciting but at the same time it has its challenges. RCDC has a support system to ensure that all international students are well cared for. Our Student Services department will ensure that this transition will be as easy as possible. In our campus, we have a multi-cultural student population which provides a stimulating and exciting learning environment.

Code of Practice

Raffles College of Design & Commerce subscribes to the Code of Practice for the Pastoral Care of International Students published by the Minister of Education. Copies of the Code are available on request from our Student Services department or from the New Zealand Ministry of Education website at: www.minedu.govt.nz/goto/international

Immigration

Full details of visa and permit requirements, advice on rights of employment in New Zealand while studying, and reporting requirements are available through the New Zealand Immigration Service, and can be viewed on their website at: www.immigration.govt.nz



Health Services

International students are not entitled to publicly funded health services while in New Zealand. If you receive medical treatment during your visit, you may be liable for the full costs of that treatment. Full details on entitlements to publicly-funded health services are available through the Ministry of Health, and can be viewed on their website at:

www.moh.govt.nz

Accident Insurance

The Accident Compensation Corporation provides accident insurance for all New Zealand citizens, residents and temporary visitors to New Zealand, but you may still be liable for all other medical and related costs. Further information can be viewed on the ACC website at: www.acc.co.nz

Medical and Travel Insurance

It is compulsory for all international students to have medical and travel insurance under the code of Practice for the Pastoral Care of International Students.

Work While You Study

At the time of publication, full-time international students are allowed to work up to 20 hours per week during the academic year and up to 40 hours per week during the Christmas and New Year holiday period at the end of each academic year.

Beautiful Country With Great Outdoor Activities

If you like outdoor sports and activities, New Zealand has plenty to offer. With beautiful scenic views across many parts of the country, you will fall in love with New Zealand.

Affordable Cost of Living

Cost of study in New Zealand is lower than other countries like USA, Canada or England (amongst others) while continuing to provide a high standard of living.


Application Process

International students can apply through our Raffles International Admission Offices (IAO) or download the international student application form on our website from: www.raffles.ac.nz

To contact one of our international admission office nearest to you, please visit: www.raffles-education-network.com

For any other questions pertaining to your application, please email us at: info@raffles.ac.nz

SCHOLARSHIP INFORMATION



Since 2006, Raffles College of Design and Commerce is committed to the Auckland community it operates in. In 2008, Raffles College of Design and Commerce begin to offer partial scholarships to Year 12 and Year 13 students with the vision of helping and advancing young talents as well as encouraging them to give back to their communities after receiving their education at RCDC.

Raffles College of Design and Commerce has been offering scholarships ever since, and is pleased to offer 5 partial scholarships, up to \$2,000 each, for the academic years 2012 and 2013.

The scholarships are only available to Year 12 and 13 graduates and applicants and must have the minimum of NCEA Level 3, and are awarded on the basis of academic merit and take into account other achievements and financial hardship.

The scholarship is applicable to our full range of full time programmes. The closing date for the scholarship application submissions for the academic year 2013 is 4pm Wednesday 31 October 2012.

For more information and scholarship form, please contact us on 09 369 1906 or email info@raffles.ac.nz.

CONTACT US



Credits

Graphic Design
Ashley Chow

**Address:**

Level 3, 131 Queen street
Auckland City 1010
Auckland New Zealand

Postal Address:

P.O. Box 2148
Shortland Street
Auckland 1140

Toll Free:

0800 548 333 (within NZ)

Phone:

+64 9 369 1906

Fax:

+64 9 369 1907

Email:

info@raffles.ac.nz

Website:

www.raffles.ac.nz

Raffles

College of Design and Commerce

WWW.RAFFLES.AC.NZ

0800 548 333